

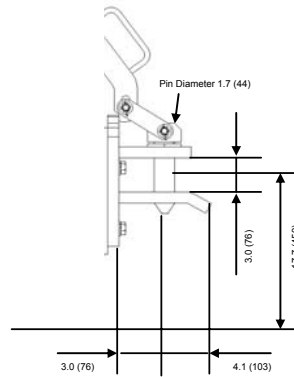
# 2TD25 Specifications

## MAIN VEHICLE SPECIFICATIONS

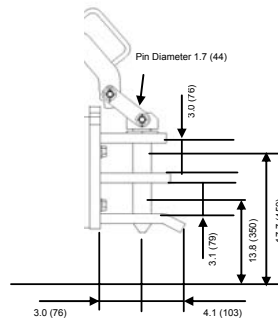
1	Manufacturer		TOYOTA
2	Model		02-2TD25
<b>PERFORMANCE</b>			
3	Travel Speed	No Load	mph (km/h)
4	Towed Weight	With One Trailer	lb (kg)
		With Two or More Trailers	lb (kg)
5	Maximum Drawbar Pull		lb (kg)
6	Gradeability	Forward, 1st Gear	% (tanθ)
		Reverse	% (tanθ)
<b>DIMENSIONS</b>			
7	Overall Length	w/o Tow Hitch	in (mm)
		w/ Tow Hitch	in (mm)
8	Overall Width		in (mm)
9	Overall Height	w/o Cab	in (mm)
		w/ Cab	in (mm)
10	Drawbar Height	Standard Drawbar	in (mm)
11	Turning Radius (Outside)		in (mm)
12	Tire Size	Front	165R13-8PR (L.T.)
		Rear	28 x 8 - 15 - 12PR (I)
13	Wheelbase		in (mm)
14	Tread	Front	in (mm)
		Rear	in (mm)
15	Underclearance		in (mm)
<b>WEIGHTS</b>			
16	Total Weight (w/o cabin)		lb (kg)
17	Weight Distribution (w/o cabin)	Front	lb (kg)
		Rear	lb (kg)
<b>ENGINE</b>			
18	Make/Model	Diesel	TOYOTA 1DZ-II
19	Number of Cylinders		4
20	Displacement		Cu. In. (cc)
21	Rated Horsepower / R.P.M.		SAE Net HP (kW)
22	Rated Torque / R.P.M.		SAE Net ft/lb (N-m)
<b>FUEL SYSTEM</b>			
23	Fuel Tank Capacity- Diesel	US Gal (Liter)	18 (70)
<b>BATTERY</b>			
24	Voltage/ Capacity	V / AH	12 / 64
<b>BRAKE SYSTEM</b>			
25	Brake Type	Front	Disc
		Rear	Drum
26	System Type	Primary	Tandem Hydraulic
		Parking	Mechanical-Double Action
<b>TRANSMISSION</b>			
27	Transmission type	Toyota	3 Speed Automatic
28	Shifter type	Toyota	Morse Style
<b>STEERING SYSTEM</b>			
29	Steering Type		Hyd. Power Recirculating Ball

## DRAWBAR

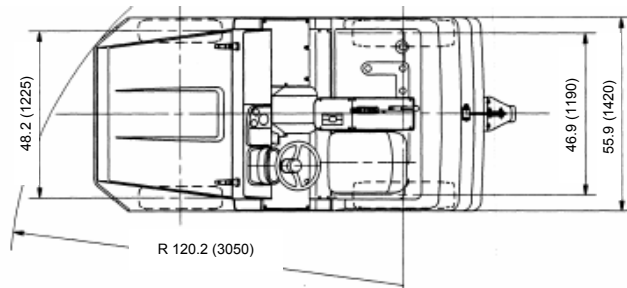
Single Stage Pin Type Drawbar (Standard)



Double Stage Pin Type Drawbar (Option)

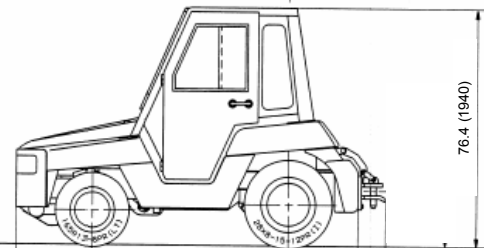
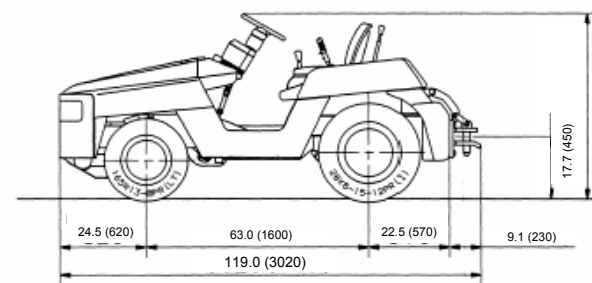


Units: in (mm)

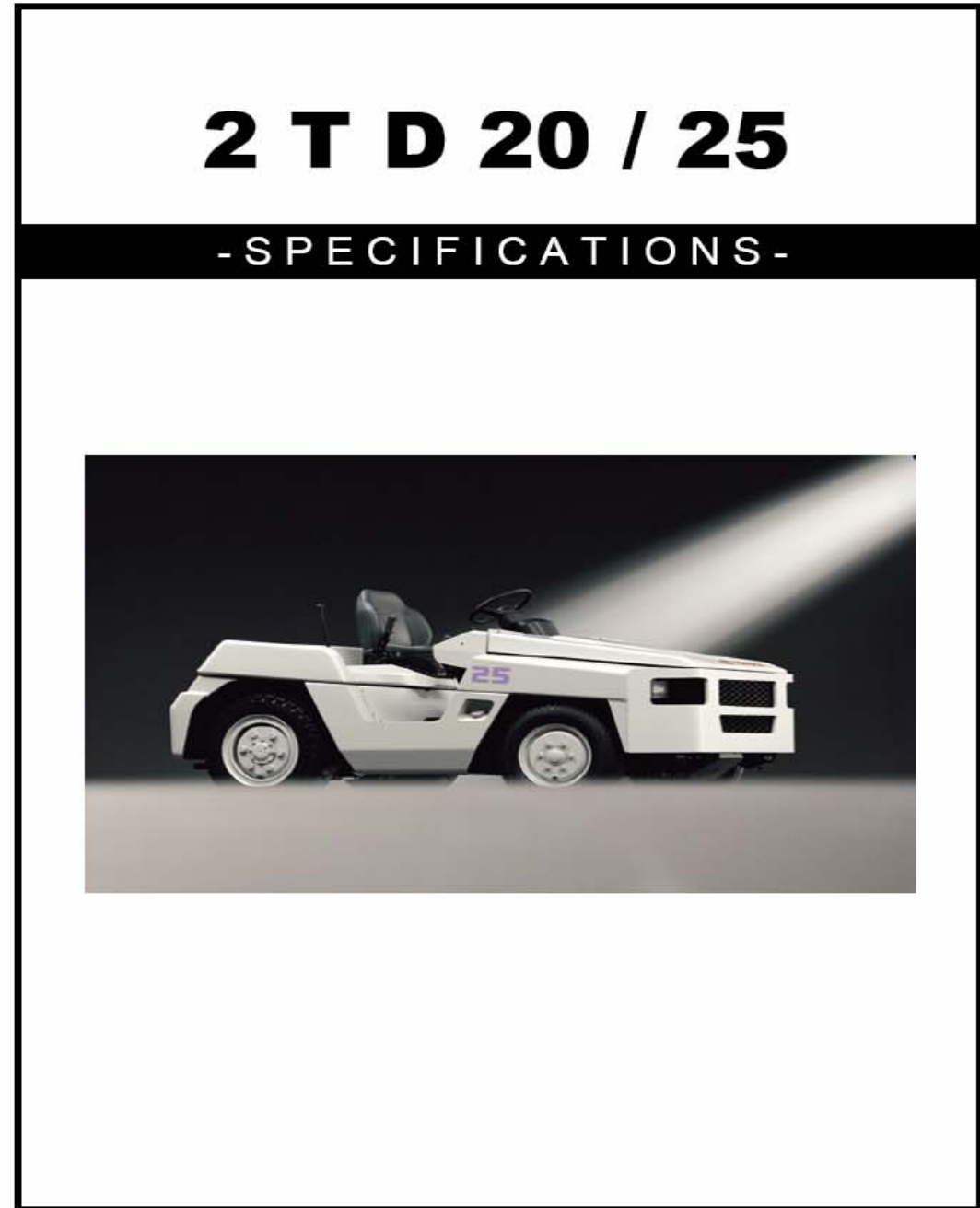


Ramp Degree	Ramp Grade	Level Start with One Trailer - lb (kg)	Start on Grade with One Trailer - lb (kg)
0°	0.0% *	72,752 (33,000)	---
1°	1.7% *	72,752 (33,000)	52,910 (24,000)
2°	3.4%	72,752 (33,000)	41,887 (19,000)
3°	5.2%	63,933 (29,000)	35,274 (16,000)
4°	6.9%	50,706 (23,000)	30,864 (14,000)
5°	8.7%	41,887 (19,000)	26,455 (12,000)
6°	10.5%	35,274 (16,000)	22,046 (10,000)
7°	12.2%	28,660 (13,000)	20,503 (9,300)
8°	14.0%	24,251 (11,000)	18,078 (8,200)
9°	15.8%	22,046 (10,000)	16,094 (7,300)
10°	17.6%	20,062 (9,100)	14,330 (6,500)

Based on dry even concrete (Coefficient of Rolling Resistance = 0.02)  
\*Towed weight is increased by 50% when pulling two or more trailers



2TD25 with Optional Steel Cabin



Some product features described herein are optional. Please consult your dealer for specifications. Details of specifications and equipment are based on information available at time of printing and may change without notice.



© 2007 Toyota Material Handling, U.S.A. Inc. (3/07)

# 4,400 – 5,500 lbs Drawbar Pull

## PERFORMANCE

- Toyota 1DZ-II 2.4 Diesel Engine
- UL Compliant Type D
- 3 Speed Automatic Transmission
- 57,300/72,750 lb Towing Capacity (2TD20/25)
- Standard Sedimeter
- Front Disc & Rear Drum Hydraulic Brakes
- Front Radial, Rear Bias Ply Pneumatic Tires
- 16 MPH Unloaded Travel Speed
- Hydraulic Power Steering
- EPA/CARB Certified Engine
- Super Glow Control System
- Torque Converter Oil Cooler

## ERGONOMICS

- Infinitely Adjustable Tilt Steering Wheel
- Operator Presence Sensing System (OPSS)
- Low Entry Step height
- Double Action Parking Brake
- Adjustable Seat (Fore/Aft)
- Morse Style Gear Selector
- Integrated Monitoring Center with Hourmeter, Fuel, Coolant and warning Indicators
- Heavy Duty Vinyl Seat

## BODY/EXTERIOR DESIGN

- Heavy Gauge Steel Construction
- Speedometer
- Rear Single Stage Pin Type Hitch with Remote Release
- Heavy Duty Front Steel Bumper
- Easy Access Service Compartments
- Recessed Rear Combination Lights
- Tight Turning Radius
- Industrial Style Front Axle

## OPTIONS

- Steel Cabin with Door
- Steel Cabin without Door
- Canvas Cabin with Windshield
- Turn Signal Lights
- Rear Combination Lights
- Hydraulic Powered Hitch Release
- Steel Cabin Accessory option:
  - Front Windshield
  - Heater and Defroster
  - Center Rear View Mirror
  - L & R Rear View Mirrors
- Left and Right Rear View Mirrors
- Suspension Seats
- Custom Paint
- Two Stage Rear Drawbar Pin
- Front Drawbar
- Seat Belts
- Yellow Beacon

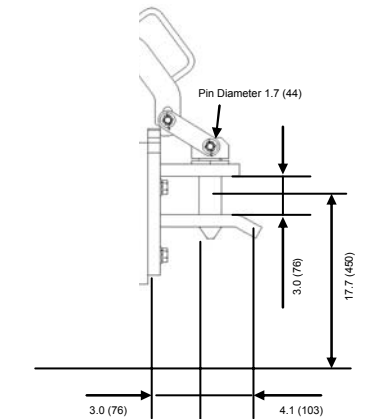
# 2TD20 Specifications

## MAIN VEHICLE SPECIFICATIONS

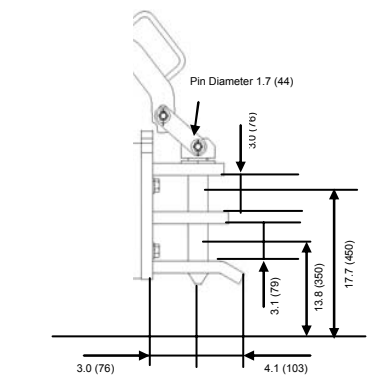
1	Manufacturer		TOYOTA
2	Model		02-2TD20
<b>PERFORMANCE</b>			
3	Travel Speed	No Load	mph (km/h)
		With One Trailer	16 (26)
4	Towed Weight	lb (kg)	57300 (26000)
		With Two or More Trailers	86000 (39000)
5	Maximum Drawbar Pull	lb (kg)	4400 (2000)
6	Gradeability	Forward, 1st Gear	% (tanθ)
		Reverse	46
			34
<b>DIMENSIONS</b>			
7	Overall Length	w/o Tow Hitch	in (mm)
		w/Tow Hitch	110.0 (2790)
8	Overall Width		in (mm)
			119.0 (3020)
9	Overall Height	w/o Cab	in (mm)
		w/ Cab	55.9 (1420)
10	Drawbar Height	Standard Drawbar	in (mm)
			54.8 (1390)
11	Turning Radius (Outside)		in (mm)
			76.4 (1940)
12	Tire Size	Front	in (mm)
		Rear	17.7 (450)
			165R13-8PR (LT)
13	Wheelbase		in (mm)
			28 x 8 - 15 - 12PR (L)
14	Tread	Front	in (mm)
		Rear	63 (1600)
			48.3 (1225)
15	Underclearance		in (mm)
			46.9 (1190)
			5.9 (150)
<b>WEIGHTS</b>			
16	Total Weight (w/o cabin)	lb (kg)	7165 (3250)
17	Weight Distribution (w/o cabin)	Front	lb (kg)
		Rear	2293 (1040)
			4872 (2210)
<b>ENGINE</b>			
18	Make/Model	Diesel	TOYOTA 1DZ-I
19	Number of Cylinders		4
20	Displacement	Cu. In. (cc)	151.7 (2486)
21	Rated Horsepower / R.P.M.	SAE Net HP / (kW)	52 / (39.7) @ 2400 RPM
22	Rated Torque / R.P.M.	SAE Net ft/lb / (N-m)	118 @ 1600 (162 @ 1800)
<b>FUEL SYSTEM</b>			
23	Fuel Tank Capacity- Diesel	US Gal (Liter)	18 (70)
<b>BATTERY</b>			
24	Voltage/ Capacity	V / AH	12 / 64
<b>BRAKE SYSTEM</b>			
25	Brake Type	Front	Disc
		Rear	Drum
26	System Type	Primary	Tandem Hydraulic
		Parking	Mechanical-Double Action
<b>Transmission</b>			
27	Transmission type	Toyota	3 Speed Automatic
28	Shifter type	Toyota	Morse Style
<b>STEERING SYSTEM</b>			
29	Steering Type		Hyd. Power Recirculating Ball

## DRAWBAR

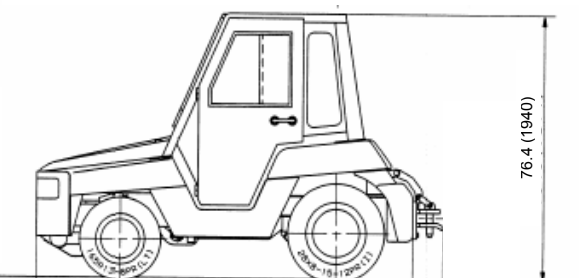
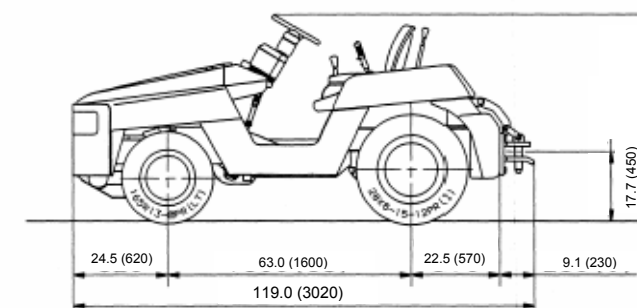
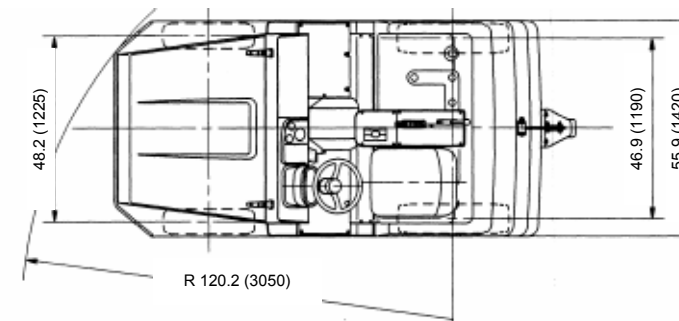
Single Stage Pin Type Drawbar (Standard)



Double Stage Pin Type Drawbar (Option)



Units: in (mm)



2TD20 with Optional Steel Cabin

## 2TD20 Towed Weight Chart\*

Ramp Degree	Ramp Grade	Level Start with One Trailer - lb (kg)	Start on Grade with One Trailer - lb (kg)
0°	0.0%	57,320 (26,000)	---
1°	1.7%	57,320 (26,000)	41,887 (19,000)
2°	3.4%	57,320 (26,000)	33,069 (15,000)
3°	5.2%	50,706 (23,000)	28,660 (13,000)
4°	6.9%	39,683 (18,000)	24,251 (11,000)
5°	8.7%	33,069 (15,000)	20,944 (9,500)
6°	10.5%	26,455 (12,000)	18,078 (8,200)
7°	12.2%	22,046 (10,000)	15,873 (7,200)
8°	14.0%	20,503 (9,300)	14,109 (6,400)
9°	15.8%	17,857 (8,100)	12,346 (5,600)
10°	17.6%	15,653 (7,100)	11,023 (5,000)

\*Based on dry even concrete (Coefficient of Rolling Resistance = 0.02)  
\*Towed weight is increased by 50% when pulling two or more trailers